



TEACHING WITH SMALL BOATS
CONFERENCE
NORTHWEST MARITIME CENTER
PORT TOWNSEND, WASHINGTON
APRIL 30, 2015

Rich Eisenberg, Executive Director Amy Eisenberg, Executive Assistant



Presque Isle Bay and Lake Erie



Erie, Pennsylvania

BMC's mission is: *To design and implement hands-on, maritime themed, educational, vocational and recreational activities for the community in a universally accessible waterfront facility.*



ERIE BOAT SAILING IN EAST CANAL BASIN



THE NEED

- 75% BMC's students are economically disadvantaged
- 82% Graduation rate in Erie
- 87% Not proficient in science
- 73% Not proficient in math
- 86% Not considered college ready
 - 0% Access to boating



CREATING SOLUTIONS

- School District Collaborations
- Changing Face of Education
 - Project Based Learning
 - Importance of STEM
- Waterfront Redevelopment

Partnership with Erie Western PA Port
Authority

-



CREATION OF A MARITIME CAMPUS

- Bayfront Maritime Center
 - Erie Maritime Museum
 - Tall Ship Brig Niagara
 - Donjon Shipbuilding and Repair
 - Erie Public Library
 - Intermodal Transportation Hub
 - Erie Western PA Port Authority
 - Bierig Sailmaker
 - National Marine Sanctuary
- Lake Erie Quadrangle National Marine Sanctuary

Maritime Campus



Downtown Erie

Origins: Collaborations and Community Support

- Port Authority: Waterfront facility, dock space, boat storage, launching, water-access, \$10,000
- Erie Yacht Club: first dinghy fleet
- Erie Community Foundation: Grant for major shop tools
- Nonprofit Partnership: Educational training and capacity building expertise
- Northwest Tri-County Intermediate Unit#5: Summer programming development
- Penn State Erie: Environmental programming, collegiate sailing
- Junior League of Erie: Adaptive Sailing Fundraising

Early BMC Programming



BMC's PRIMARY PROGRAMS

→ **Bayfront Alternative Education Program (BAEP)**

3 Way Partnership Providing effective and therapeutic learning opportunities

→ **EASE, the Erie Adaptive Sailing Experience**

First & only adaptive sailing program in Pennsylvania

→ **Veterans At EASE**

Assist veterans suffering from Post-Traumatic Stress Disorder (PTSD)

→ **Project *SAIL***

Hands-on after-school job skills development activities for teens

→ **Community Rowing Program** (launched 2013)

→ **Bayfront Summer Program** (Award winning)

Educational opportunities for the children of refugees, immigrants, and migrant workers

Unique Three Way Partnership

- Erie School District
- Sarah Reed Children's Center
- Bayfront Maritime Center



" Students building something significant with their hands, their heads and their hearts."

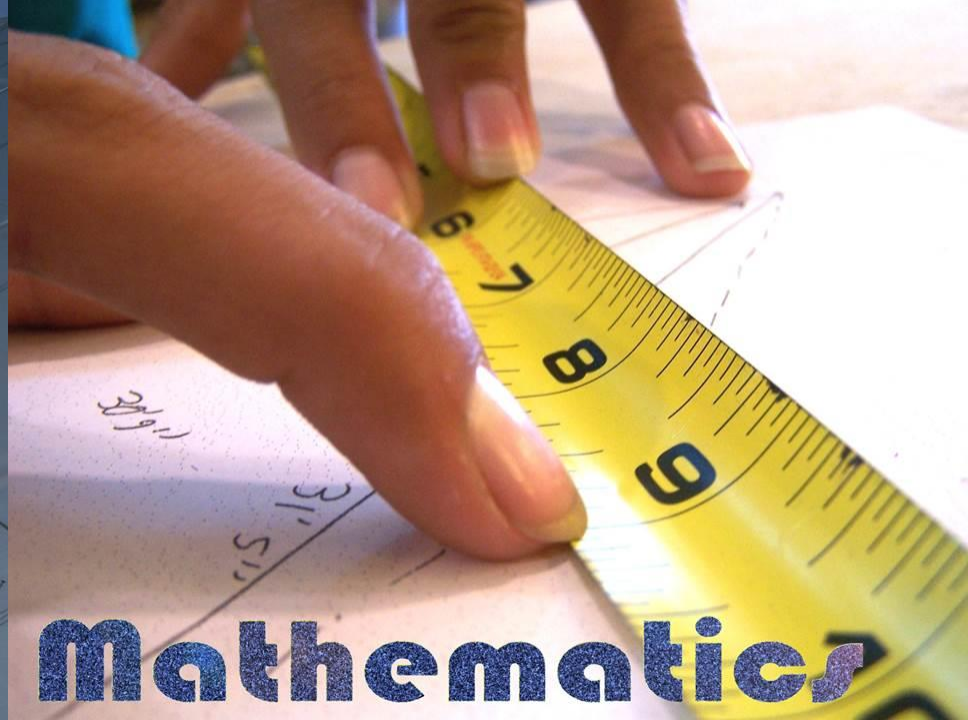
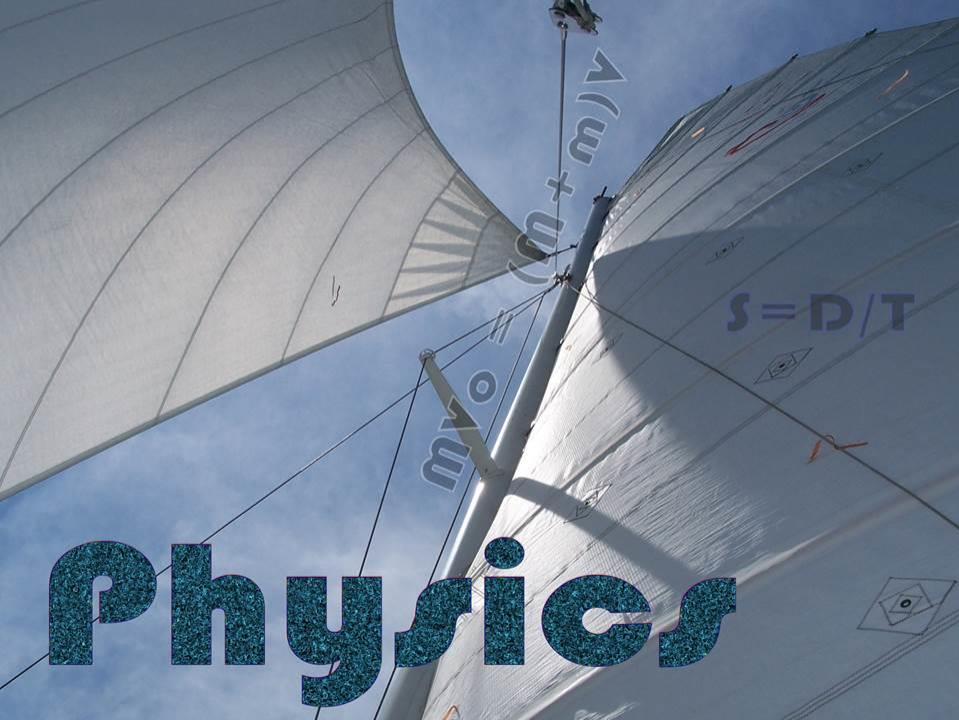
Dick Wagner, Center for Wooden Boats

BMC utilizes non-traditional classroom settings to actively engage students in their own education!











Navigation Science



FISHING BOAT. ERIE HARBOR.





TEAMWORK

CONFIDENCE

PERSEVERENCE

17,000 KIDS

STEM-FOCUSED
CURRICULUM

RISING
GRADUATION
RATES

MARITIME
CAREERS

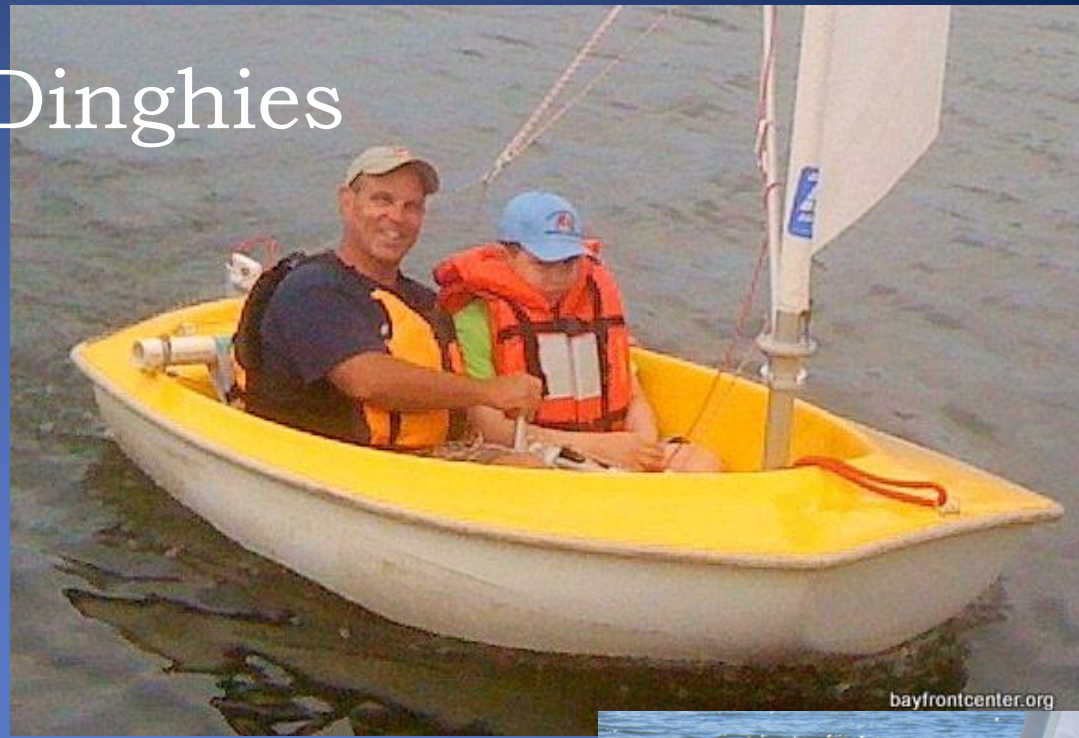
EASE, The Erie Adaptive Sailing Experience

Pennsylvania's first and only adaptive sailing program
Since 2000, with initial funding from the Junior League



- Run by dedicated core of 20 volunteers
 - Sails every Friday all summer
 - Includes local partner organizations:
 - Dr. Gertrude Barber National Institute
 - Shriners Hospitals for Children
 - Erie Homes for Children and Adults
 - The Achievement Center
 - Northwest PA Autism Society
 - Erie Housing Authority
 - Lakeshore Towing

Hansa Dinghies



Pontoon Escort Safety Vessel





EASE Volunteers at the Annual Picnic



VETERANS

AT EASE



BMC staff and peer mentor veterans from the Vets Center and VA, sail with veterans on Presque Isle Bay and Lake Erie to alleviate PTSD.



Project SAIL After School Program

Successful Apprenticeships and Investments in Learning

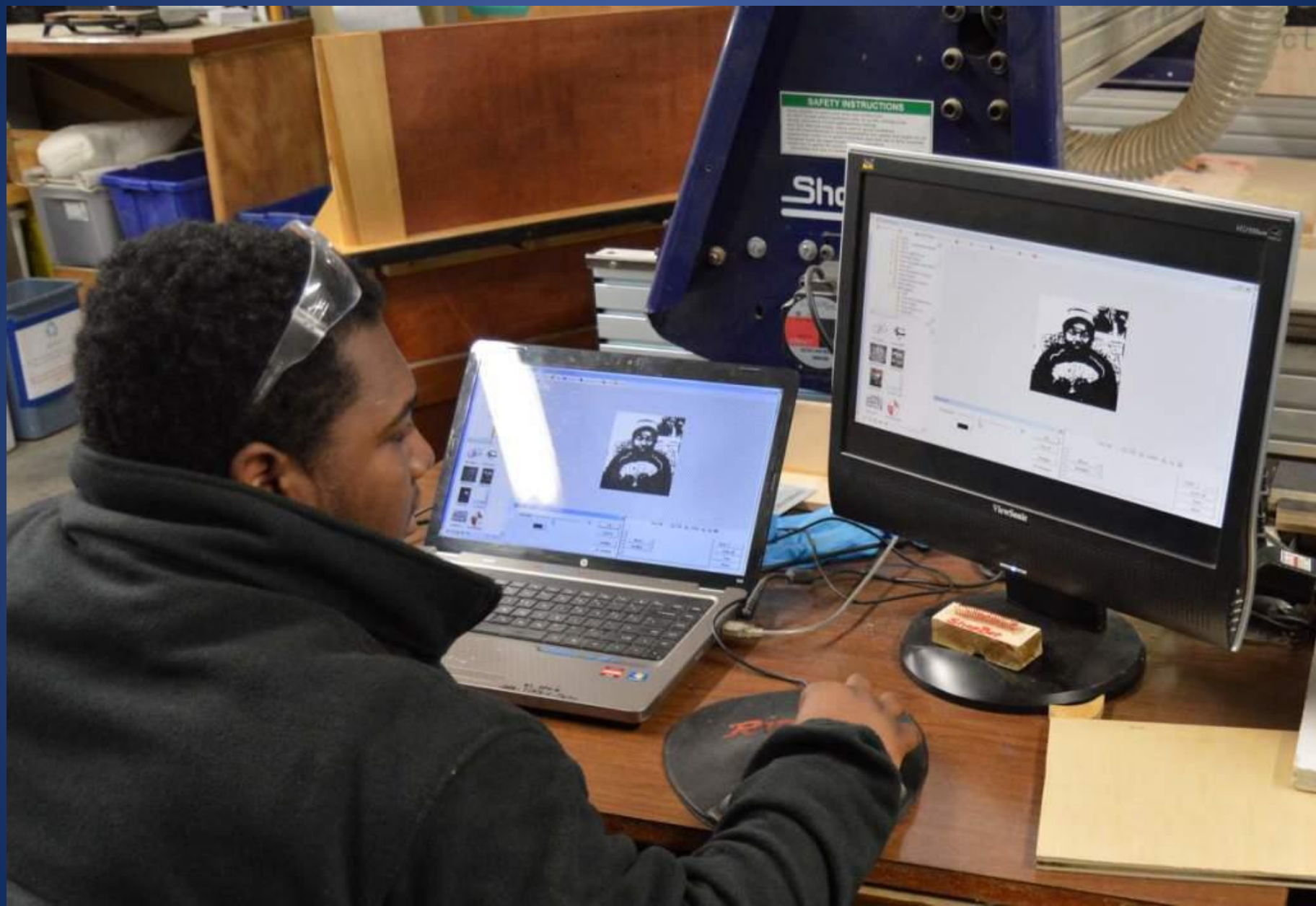
- On the job safety
- Develop job skills
- Create a resume
- Become familiar with job site etiquette
- Practice Interviews
 - Field trips
 - Applications
- Financial literacy

"Our Job is Anchored in Safety"





















Community Rowing

First traditional rowing in Erie





Lake Erie MOMENTS

PHOTO STORY BY JACK HANRAHAN

Skiff students



Dazhane Roberts, 17, left, of Erie, and Jodi Carpenter, maritime educator with the Bayfront Maritime Center, apply a sealant to the panels of a 22-foot skiff.

I think we should paint it a bright color, like pink or yellow," says Dazhane Roberts, 17, of Erie, a student in

the Alternative Education Program at the Bayfront Maritime Center. She is one of 160 students looking forward to rowing the 22-foot St. Ayles Skiff on the bay when the project is finished in the spring.

"We needed a project and this is a perfect fit," says Bayfront Maritime Center Director Rich Eisenberg. "The students are learning the application of math and science concepts. They are learning perseverance and teamwork. Staying on task is a necessity, and that is a skill we all need throughout life," he says.

The Bayfront Maritime Center will be holding a fundraiser, Ales for Sails, on Friday. Check out www.bayfrontcenter.org for details.

Have an idea for Lake Erie Moments? E-mail chris.millette@timesnews.com.

chris.millette@timesnews.com.



ONLINE EXTRAS: Watch video of students building the skiff. GoErie.com/video • See a gallery of the best photos of the week. GoErie.com/photos





Bayfront Summer Program

- Since 1999
- Hands-on, engaging, different
- Focused on reading and language arts
- Immigrants, refugees, migrant students
- Includes math, art,
- Credit recovery and remedial
- Includes sailing, rowing, paddling,
- Boat shop, CNC, and maritime simulator projects during inclement weather















Dr. Lisa Ramirez Director of Migrant Education
Office of Elementary and Secondary Education
United States Department of Education



2011 *Excellence in Summer Programming Award*
National Summer Learning Institute













BMC's NEWEST INITIATIVE...



The Hull Arriving at BMC

Keith &
Kathy Palmerton



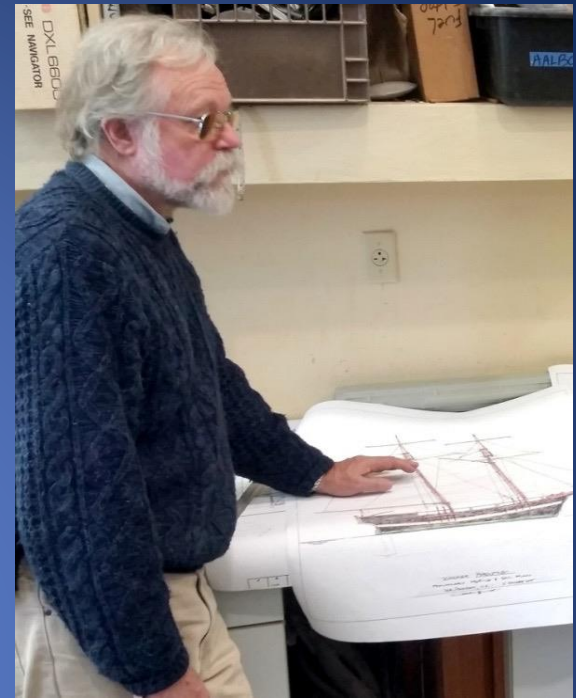
"TEAM PORCUPINE"



Bob Arlet -
Shipwright

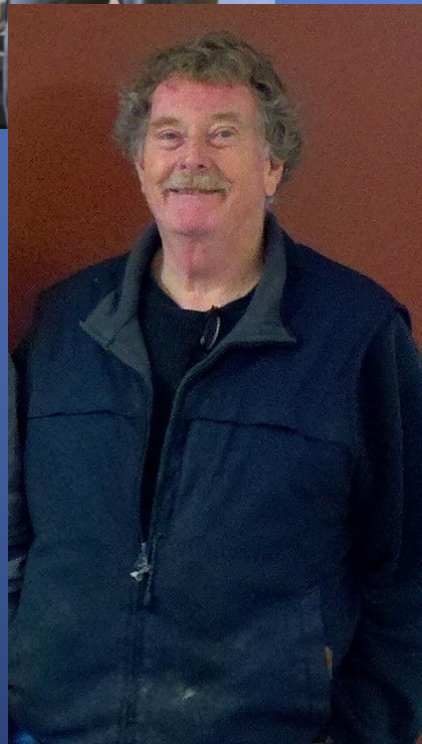
David Bierig –
Sailmaker

Jamie Trost –
Project Manager



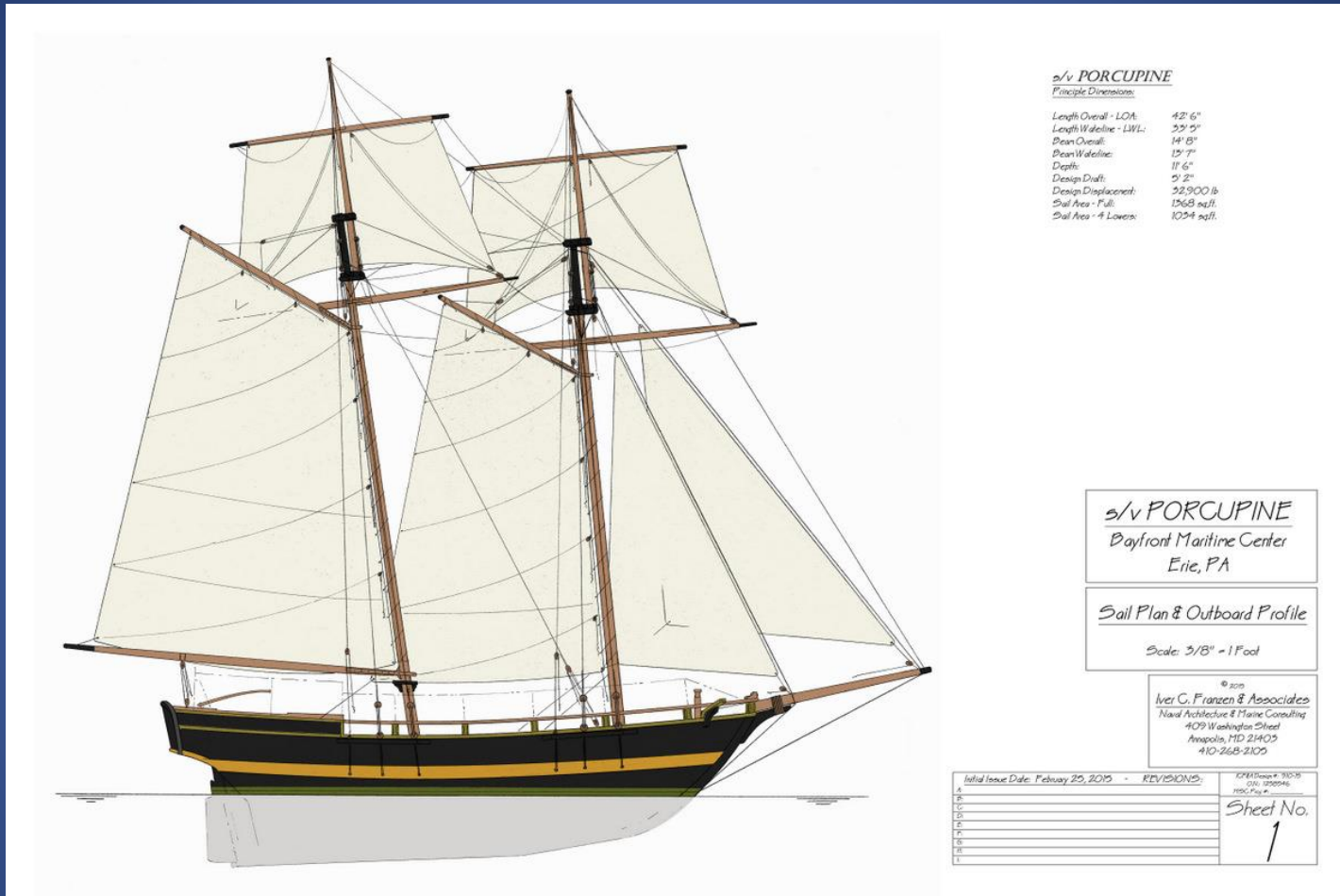
Iver Franzen – Naval Architect

David Frew -
Fundraiser



Rich
Eisenberg –
BMC Director

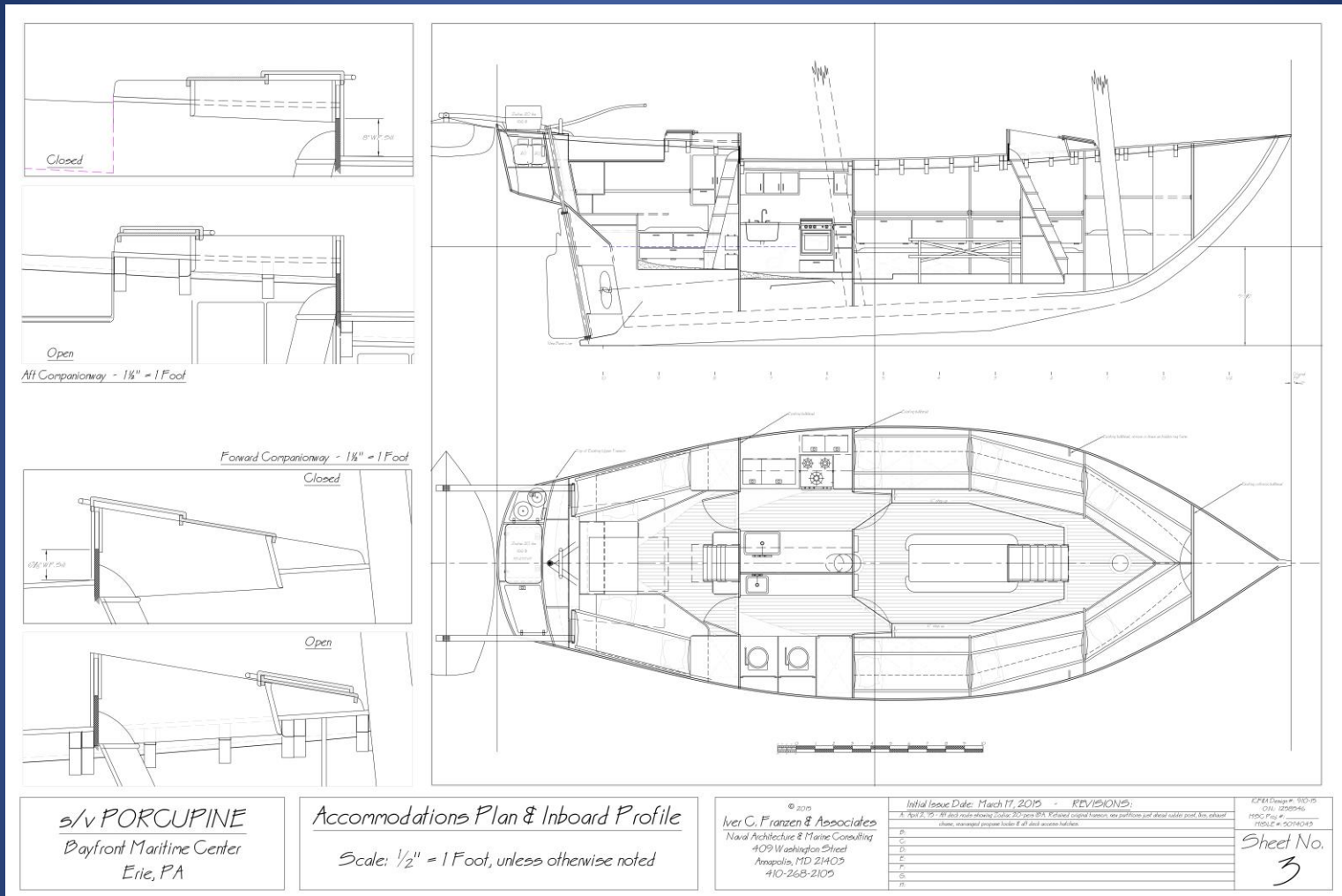
1813 Gunboat Schooner



Why Porcupine?

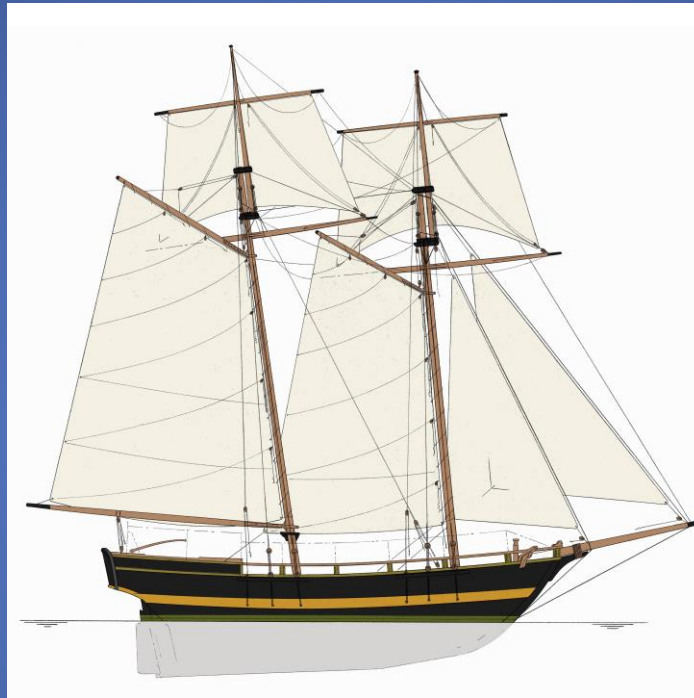
- Right size for donated hull
- Dobbins Designed
- Longest continuous career
- Diverse service:
 - Served in Navy, Coastal Survey, Revenue Cutter, Merchant Fleet
- Appeal to students
- “Native” to Erie area

PORCUPINE'S ACCOMMODATIONS PLAN



Modifying Hull to USCG Regs & 19th Century Gunboat Appearance
Proposed Certification for:
28 Passengers (Daysails)
12 Trainees (Overnight Programs)

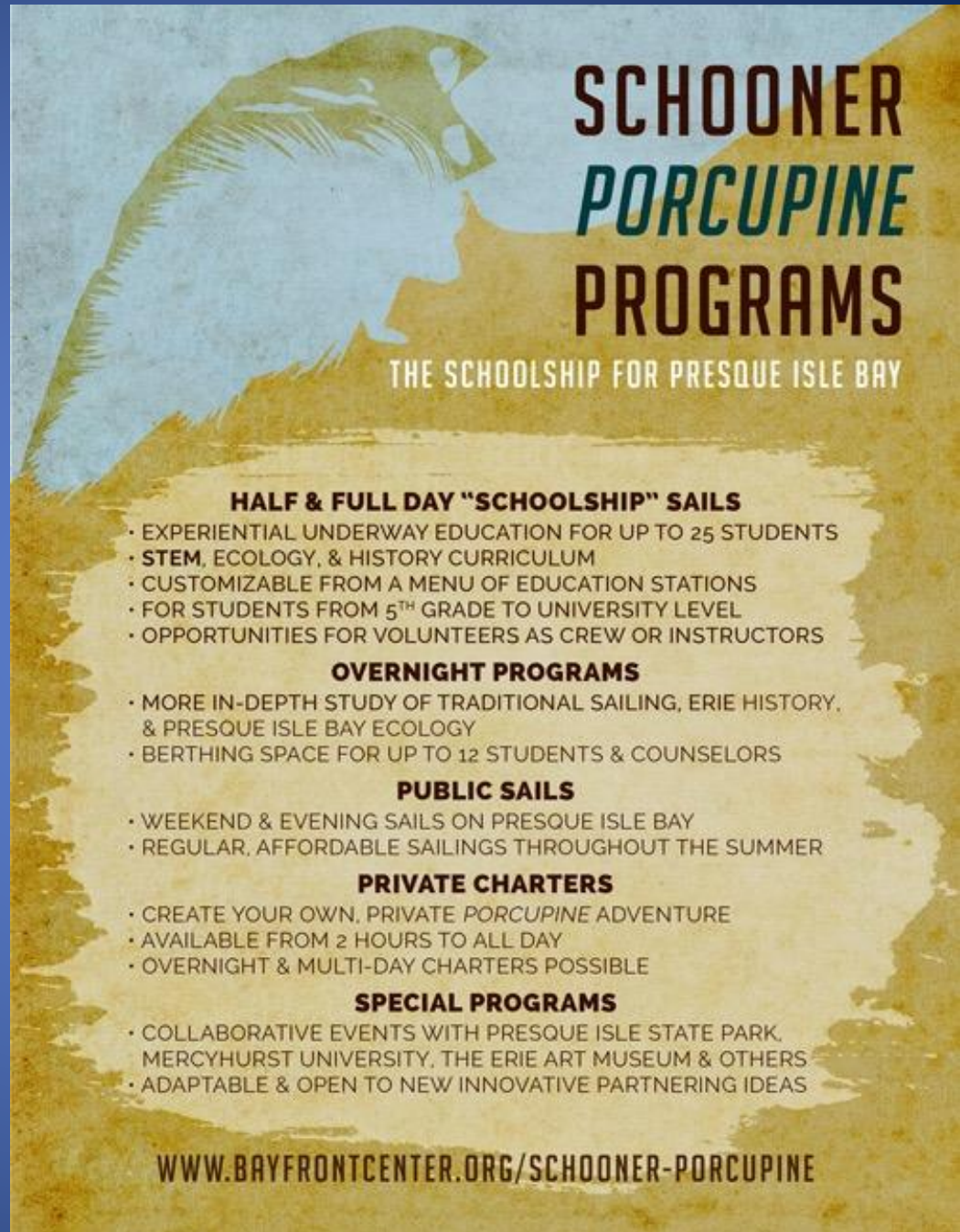
Porcupine – a sustainable, high-profile Bayfront asset to enhance BMC programs



More than ***doubles*** current capacity
Extends BMC's Reach
New Programming as the Schoolship for Presque
Isle Bay

STEM- FOCUSED FLOATING CLASSROOM

- Sailing opportunities for up to 2000 students during school year
- Creating a “menu” of science, technology, and humanities stations for teachers to customize programs
- Porcupine’s long career perfect for exploring Erie’s History and Technological changes over time
- All programs—student and public—highlight history and resources of Presque Isle Bay

A poster for the Schooner Porcupine Programs. The background is a textured, yellowish-brown color. On the left, there is a stylized illustration of a porcupine's head and shoulders in shades of blue and green. The text is arranged in a clear, hierarchical manner. The title 'SCHOONER PORCUPINE PROGRAMS' is in large, bold, dark blue letters. Below it, 'THE SCHOOLSHIP FOR PRESQUE ISLE BAY' is in smaller, dark blue letters. The main body of the poster lists various programs under bold headings: 'HALF & FULL DAY "SCHOOLSHIP" SAILS', 'OVERNIGHT PROGRAMS', 'PUBLIC SAILS', 'PRIVATE CHARTERS', and 'SPECIAL PROGRAMS'. Each heading is followed by a bulleted list of details. At the bottom, the website 'WWW.BAYFRONTCENTER.ORG/SCHOONER-PORCUPINE' is printed in dark blue.

**SCHOONER
PORCUPINE
PROGRAMS**

THE SCHOOLSHIP FOR PRESQUE ISLE BAY

HALF & FULL DAY "SCHOOLSHIP" SAILS

- EXPERIENTIAL UNDERWAY EDUCATION FOR UP TO 25 STUDENTS
- **STEM**, ECOLOGY, & HISTORY CURRICULUM
- CUSTOMIZABLE FROM A MENU OF EDUCATION STATIONS
- FOR STUDENTS FROM 5TH GRADE TO UNIVERSITY LEVEL
- OPPORTUNITIES FOR VOLUNTEERS AS CREW OR INSTRUCTORS

OVERNIGHT PROGRAMS

- MORE IN-DEPTH STUDY OF TRADITIONAL SAILING, ERIE HISTORY, & PRESQUE ISLE BAY ECOLOGY
- BERTHING SPACE FOR UP TO 12 STUDENTS & COUNSELORS

PUBLIC SAILS

- WEEKEND & EVENING SAILS ON PRESQUE ISLE BAY
- REGULAR, AFFORDABLE SAILINGS THROUGHOUT THE SUMMER

PRIVATE CHARTERS

- CREATE YOUR OWN, PRIVATE PORCUPINE ADVENTURE
- AVAILABLE FROM 2 HOURS TO ALL DAY
- OVERNIGHT & MULTI-DAY CHARTERS POSSIBLE

SPECIAL PROGRAMS

- COLLABORATIVE EVENTS WITH PRESQUE ISLE STATE PARK, MERCYHURST UNIVERSITY, THE ERIE ART MUSEUM & OTHERS
- ADAPTABLE & OPEN TO NEW INNOVATIVE PARTNERING IDEAS

WWW.BAYFRONTCENTER.ORG/SCHOONER-PORCUPINE

SCHOONER *PORCUPINE* SUPPORTERS

THROUGH APRIL 9TH, 2015

—\$25,000—

Erie Insurance

—\$10,000—

Bill Casey

(with GE Match)

—\$5,000—

David Bierig - Harry W. Bierig - Howard & Mary Lincoln
Tim Sedney & Janis Guthrie & Gary Liebel
United Auto Workers Western PA CAP Council

—\$2,000—

Richard Nagle & Cynthia Taylor - Nick Scott

—\$1,000—

Terrance Cavanaugh - Rich & Louise Loesel - S.O.N.S. of Lake Erie - Sreela Sasi
Stan Schuyler

—OTHER SUPPORTERS—

Jeff Beich - Jerry Bien - Builder's Hardware - Bill Coleman - Alec & Sharon Dale - Pat Dean -
Deborah Di Placido - David Frew - Jon Frew - John Garhart - Herald Green - Robert Gura
James Hardesty - Rick Hersey - Michael Hill - Bill Jackson
G.E. Foundation Matching Gifts Program - Gil & Gail Jacobs - Carol Kaufman - Emily Kuhn
Randolph & Cherie Lachowski - John Eric Lindholm - Jane Manross - Jack & Judy McKibben
Timothy Mehl - Kathleen Moore & Jamie Trost - Mary Mulard - Alex Nagle - Emily A. Noble
Betsy Palmerton - Melissa Pierick - Charles Ridley - Ruth Ridley - Mark Schreckengost
Richard Scott - Greg Sikora - Josh Triber - Everett & Susan Walker - Ainee Wunderle

HULL, ENGINE, AND INSPIRATION FOR THE PROJECT

Thanks to Kathy & Keith Palmerton

THANK YOU FOR HELPING FLOAT THE "SCHOOLSHIP FOR PRESQUE ISLE BAY"

Helping Float Porcupine

Fundraising Goal \$200,000

Donations/Pledges to Date \$77,887

Erie Insurance
UAW CAP Council
GE Matching Funds
S.O.N.S. of Lake Erie

WILL YOU JOIN US ON THE VOYAGE?

SCHOONER PORCUPINE NAMING OPPORTUNITIES

Main Mast	\$15,000	Sail	\$5,000
Engine Room	\$10,000	Propeller & Shaft	\$5,000
Fore Mast	\$8,000	Masts (2)	\$5,000
Main Sail	\$7,500	Cabin	\$4,000
Chart Table	\$1,500	Boom	\$4,000
Bowsprit	\$6,000	Booms (2)	\$3,000
Galley	\$5,000	Sails (2)	\$3,000
Cockpit	\$5,000	Mains Bunk	\$2,500
Forecastle	\$5,000	Rigging	\$2,500
			\$2,000
		Or Become a Plank Holder for \$50	
		Bowsprit Rigging	\$1,500



SchoolShip for Presque Isle Bay

Ales for Sails















Small Boat Festival

Presque Isle By Messabout

Cardboard Boat Regatta













